

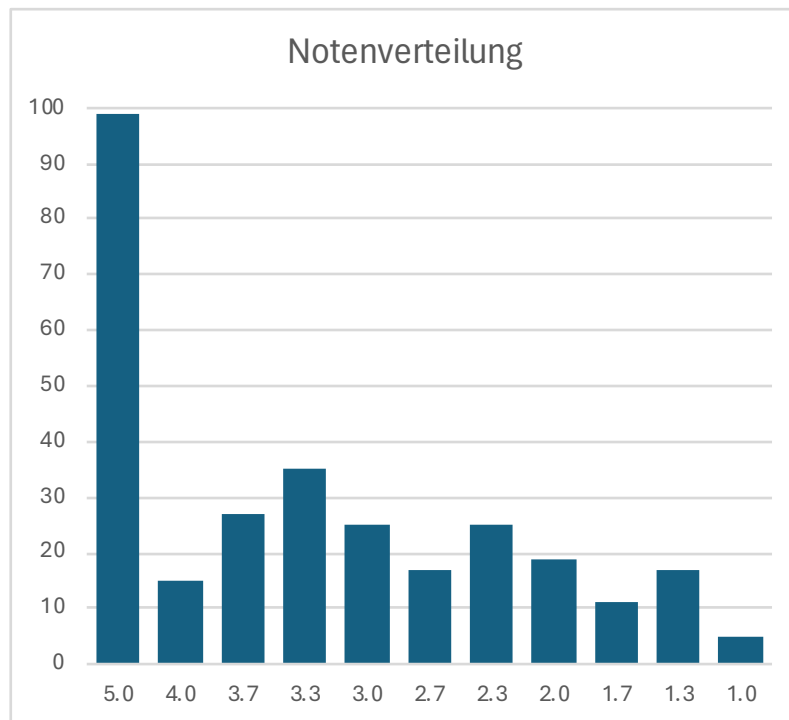
## AuD WiSe 23/24 Klausur Ergebnisse

*Ergebnisse*

Code	Punkte	Note
2052	28	5.0
2053	61.5	3.3
2054	50	4.0
2055	68.5	3.0
2056	76.5	2.3
2057	13	5.0
2058	82	2.0
2059	64.5	3.3
2060	51.5	4.0
2061	52	4.0
2062	72.5	2.7
2063	42	5.0
2064	73	2.7
2065	87	1.7
2066	30	5.0
2067	54.5	4.0
2068	68.5	3.0
2069	49	5.0
2070	90.5	1.3
2071	56.5	3.7
2072	63	3.3
2073	20	5.0
2074	46.5	5.0
2075	41.5	5.0
2076	61	3.3
2077	53.5	4.0
2078	61	3.3
2079	57.5	3.7
2080	38.5	5.0
2081	67.5	3.0
2082	40.5	5.0
2083	43.5	5.0
2084	68.5	3.0
2085	38	5.0
2086	39.5	5.0
2087	59.5	3.7
2088	91	1.3
2089	14	5.0
2090	93.5	1.3
2091	95	1.0
2092	94.5	1.3
2093	96	1.0
2094	58	3.7

*Notengrenzen*

Punkte	Note	#Studis
0-49.5	5.0	99
50-54.5	4.0	15
55-59.5	3.7	27
60-64.5	3.3	35
65-69.5	3.0	25
70-74.5	2.7	17
75-79.5	2.3	25
80-84.5	2.0	19
85-89.5	1.7	11
90-94.5	1.3	17
95-100	1.0	5



2095	42	5.0
2096	72.5	2.7
2097	59.5	3.7
2098	44	5.0
2099	79	2.3
2100	62.5	3.3
2101	57.5	3.7
2102	79	2.3
2103	45	5.0
2104	60.5	3.3
2105	69	3.0
2106	48	5.0
2107	64.5	3.3
2108	83	2.0
2109	62.5	3.3
2110	82	2.0
2111	70	2.7
2112	86	1.7
2113	60	3.3
2114	52.5	4.0
2115	29	5.0
2116	34	5.0
2118	32.5	5.0
2119	43	5.0
2120	40.5	5.0
2121	68.5	3.0
2122	76.5	2.3
2123	39	5.0
2124	77.5	2.3
2125	50	4.0
2126	55	3.7
2127	75.5	2.3
2128	77	2.3
2129	40.5	5.0
2130	43.5	5.0
2131	46	5.0
2132	29.5	5.0
2133	38	5.0
2134	23.5	5.0
2135	56.5	3.7
2136	56	3.7
2137	57	3.7
2138	71	2.7
2139	41	5.0
2140	60	3.3
2141	62.5	3.3
2142	90	1.3
2143	50.5	4.0

2144	58	3.7
2145	64.5	3.3
2146	68	3.0
2147	88.5	1.7
2149	67.5	3.0
2150	31	5.0
2151	20	5.0
2152	29	5.0
2153	26	5.0
2154	51	4.0
2155	90.5	1.3
2156	41.5	5.0
2157	56.5	3.7
2158	77	2.3
2159	68.5	3.0
2160	79	2.3
2161	48	5.0
2162	29.5	5.0
2163	81	2.0
2164	47.5	5.0
2165	47.5	5.0
2166	55	3.7
2167	94.5	1.3
2168	74.5	2.7
2169	62	3.3
2170	53.5	4.0
2174	25	5.0
2175	17.5	5.0
2176	77	2.3
2177	68.5	3.0
2178	58.5	3.7
2179	46	5.0
2180	82.5	2.0
2181	48.5	5.0
2182	78	2.3
2183	63	3.3
2184	58.5	3.7
2185	43	5.0
2186	60.5	3.3
2187	77.5	2.3
2188	29	5.0
2189	25	5.0
2190	39.5	5.0
2191	60.5	3.3
2192	63.5	3.3
2193	55	3.7
2194	32.5	5.0
2195	75	2.3

2196	44.5	5.0
2197	46.5	5.0
2198	47.5	5.0
2199	59	3.7
2200	81.5	2.0
2201	94.5	1.3
2202	86	1.7
2203	28.5	5.0
2204	82	2.0
2205	61.5	3.3
2206	69.5	3.0
2207	90	1.3
2208	25.5	5.0
2209	46	5.0
2210	59.5	3.7
2211	84	2.0
2212	71	2.7
2213	86	1.7
2214	57	3.7
2215	93	1.3
2216	79	2.3
2217	76.5	2.3
2218	72.5	2.7
2219	85	1.7
2220	40	5.0
2221	90.5	1.3
2222	79	2.3
2223	79.5	2.3
2224	71	2.7
2225	66	3.0
2226	65	3.0
2228	90.5	1.3
2229	62	3.3
2230	86	1.7
2231	66	3.0
2232	84.5	2.0
2233	40.5	5.0
2234	61	3.3
2235	68	3.0
2236	73.5	2.7
2237	93.5	1.3
2238	41	5.0
2239	25.5	5.0
2240	68.5	3.0
2241	65.5	3.0
2242	47.5	5.0
2243	80.5	2.0
2244	29.5	5.0

2245	75	2.3
2246	53.5	4.0
2247	46	5.0
2249	74	2.7
2250	82.5	2.0
2251	48	5.0
2252	67	3.0
2253	51.5	4.0
2254	68	3.0
2255	56	3.7
2256	81	2.0
2257	60.5	3.3
2258	43.5	5.0
2261	41.5	5.0
2262	86	1.7
2263	26.5	5.0
2264	53.5	4.0
2265	44.5	5.0
2266	34	5.0
2267	47.5	5.0
2268	92.5	1.3
2269	63.5	3.3
2270	60	3.3
2271	69	3.0
2272	89	1.7
2273	59	3.7
2274	36.5	5.0
2275	29.5	5.0
2276	80.5	2.0
2277	56.5	3.7
2278	59	3.7
2279	61	3.3
2280	22.5	5.0
2281	35.5	5.0
2282	38.5	5.0
2283	60	3.3
2284	83.5	2.0
2285	40	5.0
2286	98	1.0
2287	45	5.0
2288	36.5	5.0
2289	15	5.0
2290	37.5	5.0
2291	80	2.0
2292	50	4.0
2293	85	1.7
2294	79	2.3
2295	64.5	3.3

2296	75	2.3
2297	83.5	2.0
2298	62.5	3.3
2304	44.5	5.0
2305	45	5.0
2306	39.5	5.0
2307	61	3.3
2308	36.5	5.0
2309	63	3.3
2310	30	5.0
2311	65.5	3.0
2312	67.5	3.0
2313	77.5	2.3
2314	61.5	3.3
2315	19.5	5.0
2316	64.5	3.3
2317	43.5	5.0
2318	83	2.0
2319	70.5	2.7
2320	33.5	5.0
2321	65.5	3.0
2322	57.5	3.7
2323	50.5	4.0
2324	92.5	1.3
2325	37.5	5.0
2326	46	5.0
2327	88	1.7
2328	59	3.7
2329	59	3.7
2330	70	2.7
2331	76.5	2.3
2332	13.5	5.0
2333	41	5.0
2334	82	2.0
2344	46	5.0
2345	19	5.0
2346	78.5	2.3
2347	63.5	3.3
2348	43.5	5.0
2349	72.5	2.7
2350	44.5	5.0
2351	71.5	2.7
2352	61	3.3
2353	8.5	5.0
2354	66	3.0
2355	63.5	3.3
2356	74.5	2.7
2357	96.5	1.0

2358	65	3.0
2359	59	3.7
2360	31	5.0
2361	73.5	2.7
2362	34.5	5.0
2363	80	2.0
2364	24	5.0
2365	95	1.0
2366	76	2.3
2367	91.5	1.3
2368	91	1.3