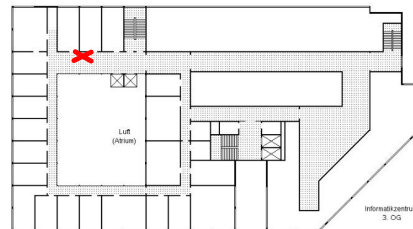


Prof. Dr. Sándor Fekete
Dr. Christiane Schmidt

Computational Geometry Homework Set 2, 21. 11. 2011

Solutions are due Wednesday, December 7th, 2011, until 11:25 in the cupboard for handing in practice sheets. **Please put your name on all pages!**



Exercise 1 (Monotonicity and Interior Cusps):

We define an *interior cusp* of a polygon as a reflex vertex v whose adjacent vertices either both have not larger or both have not smaller y -coordinates than v . Prove the following theorem:

If a polygon P has no interior cusp, then it is monotone with respect to the y -axis.

(Remember: A polygon is monotone if it can be partitioned into two chains monotone with respect to the same line. A chain p_1, \dots, p_k is called monotone with respect to a line L , if the projections of p_1, \dots, p_k onto L are ordered the same as in the chain.)

(15 points)

Exercise 2 (Triangulation of monotone Polygons):

Use the algorithm of Garey, Johnson, Preparata and Tarjan to triangulate the polygon P in Figure 1. For each iteration give the stack and diagonals that are drawn. Give the final triangulation of P .

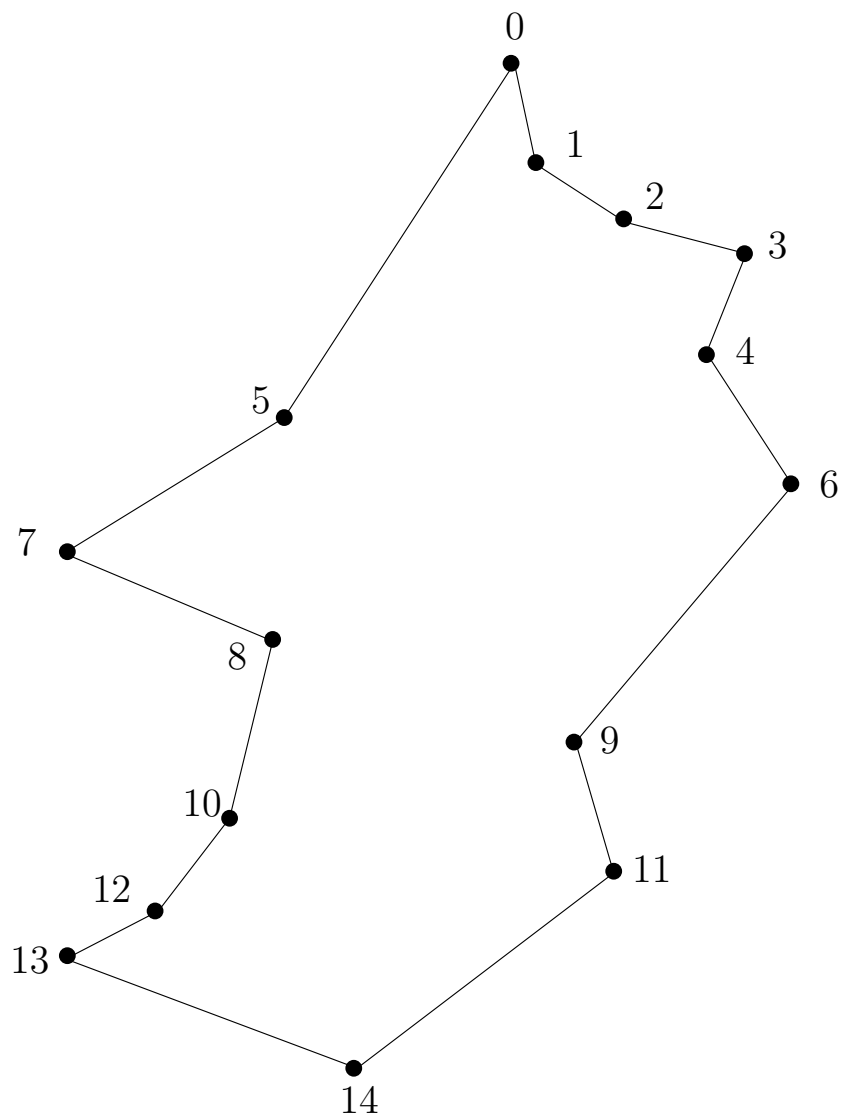


Figure 1: Polygon P .

(15 points)

Exercise 3 (Scissors Congruence):

A *dissection* of a polygon P cuts P into a finite number of smaller polygons. Triangulations can be viewed as a constrained form of dissections.

Given a dissection of a polygon P , we can rearrange its smaller polygonal pieces to create a new polygon Q of the same area. We say two polygons P and Q are *scissors congruent* if P can be cut into polygons P_1, \dots, P_n which then can be reassembled by rotations and translations to obtain Q .

- a) Is the Greek cross from Figure 2 scissors congruent to a square?
- b) Prove: Every triangle is scissors congruent with some rectangle.
- c) Prove: Any two rectangles of the same area are scissors congruent.

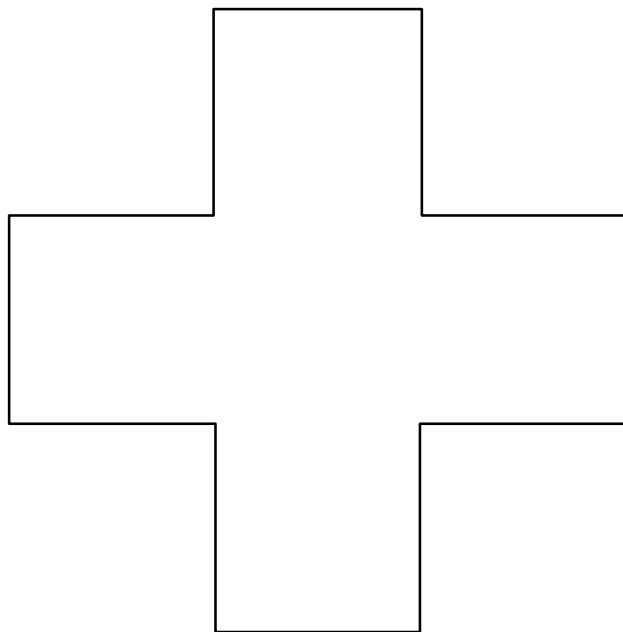


Figure 2: The Greek cross.

(10+10+10 points)